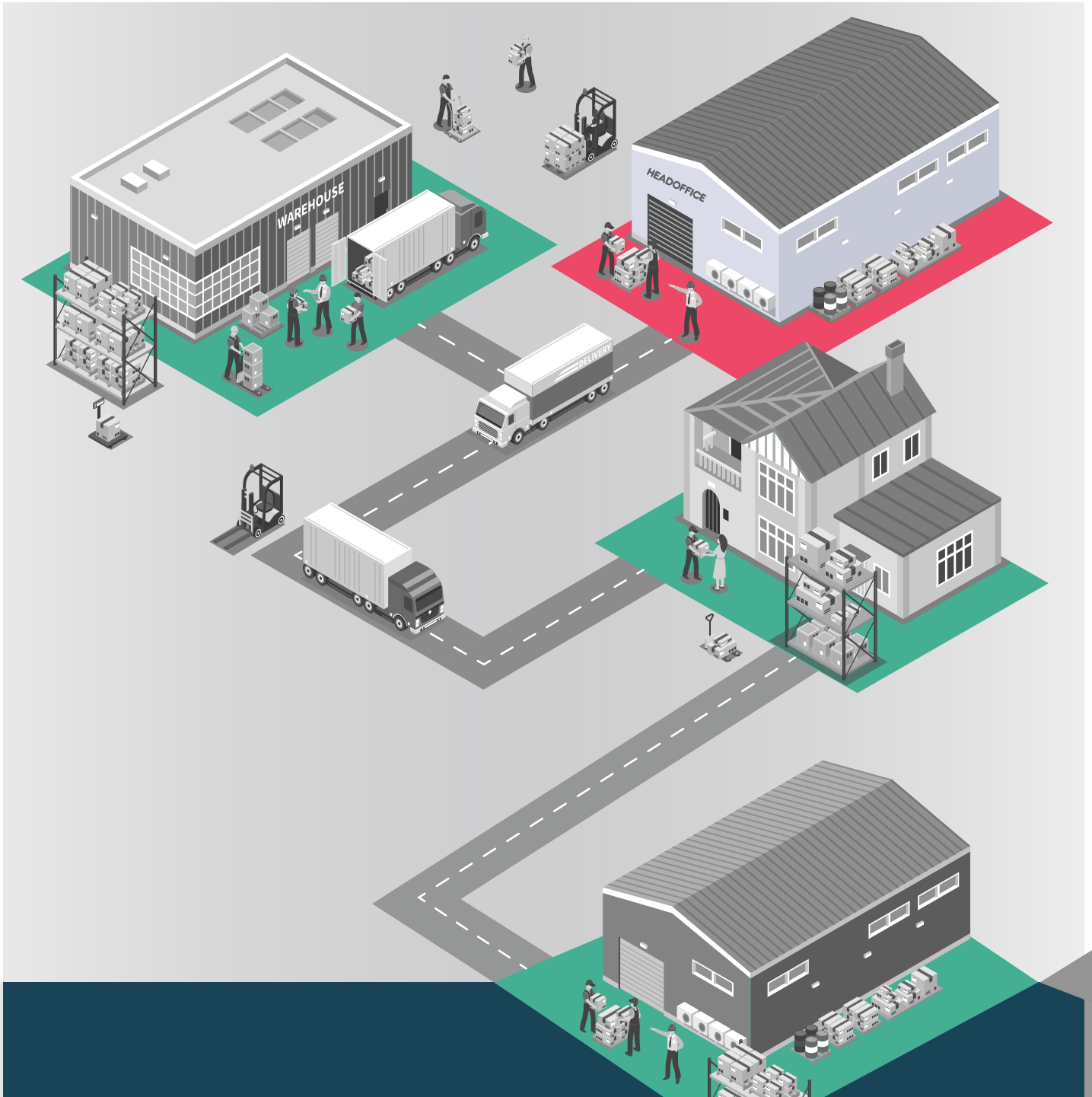




Smile Security and Surveillance Pvt. Ltd



# INTEGRATED SECURITY, SURVEILLANCE AND SECURE CONNECTIVITY SOLUTIONS FOR THE **LOGISTICS INDUSTRY**

*A secured perimeter network with advanced connectivity and surveillance equipment, complete with volumetric weighing solutions.*

[www.sssl.co.in](http://www.sssl.co.in)



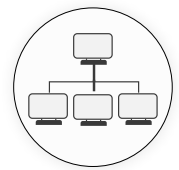
The Logistics Industry in India is growing at a rapid rate and is estimated to be about \$215bn, which is expected to grow higher. This growth rate is going to demand streamlined process, reduction in transit costs and improving the volumes by a considerable number to gain higher profits. To streamline processes, every logistics and warehouse industry needs to have advanced systems in place to ensure optimum utilisation of resources and reduce downtime.

Having advanced security, surveillance and control systems in place ensures you focus more on growing the business rather than be concentrated on managing the processes.

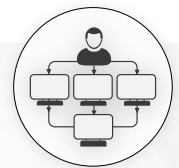
## Few Issues Prevailing in the Logistics Industry

In India, logistics industries are hampered by a wide variety of external as well as internal factors. Based on our experience of over 12 years, we will be focussed on creating highly efficient processes for the logistics industry to improve the overall productivity and improve the transit cycle.

- Increased internal theft of valuable packages
- Delay in the delivery of packages
- Last mile delivery delay
- Transit damage while handling the packages
- Loss due to volumetric weight measurement
- Poor Internet Connectivity at Remote locations



**Comprehensive Perimeter Security**



**Secure Remote Access Viewing**

## Featured Appliances and Solutions

**AnexGATE Family of Network Security & Secure Connectivity Solutions**



**AnexSECURE Family of Security & Surveillance Solutions Systems**



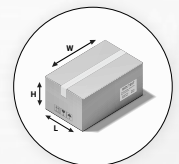
**AnexVM - Volumetric Weight Machine.**



**AnexSECURE Family of Advanced Security Equipments**



**Secure Connectivity**

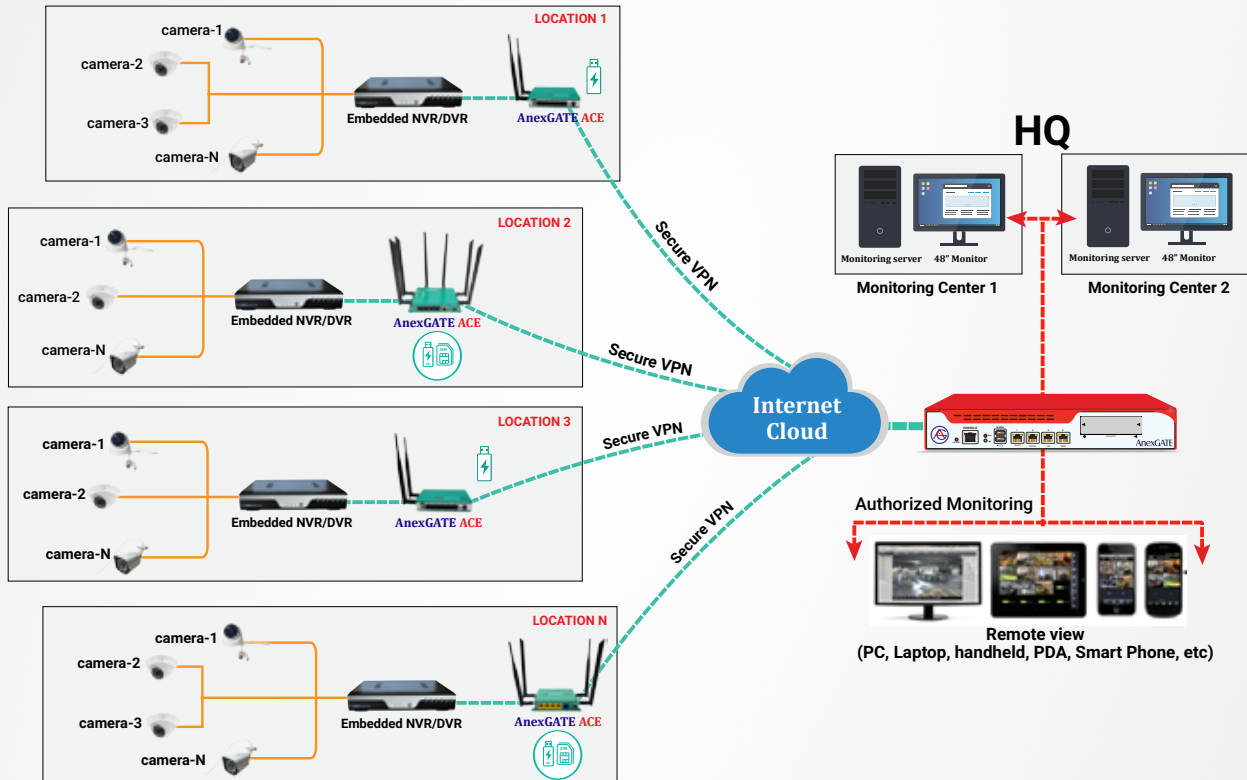


**Volumetric Weight Systems**



**Advanced Security Systems**

## Integrated Solutions for Logistics



## Solution to the Logistics Industry

### 100% Uptime with Secured Connectivity with VPN Tunnel

- Warehouses are not always located within the city limits where there is a good broadband connection. At locations where the internet connection is unstable, AnexGATE ACE can combine the output from upto 5 connections with Bandwidth Aggregation and provide a stronger connection for higher productivity.
- This appliance can support upto 2 WAN connections, 1 USB Dongle and 2 Sim cards and provide auto failover between all these connections as per your priority, so when one connection is down, it automatically transfers the connection to the next available one, ensuring 100% Internet Uptime
- This solution also focuses on mitigating the misuse of office internet and help monitor all the activity over all locations on your network
- In addition to this, a secure VPN tunnel can be created to interconnect all your branch locations to your head office and create a safe secure tunnel for all communication.

***In the logistics industry, if the network uptime is high, the packages can move ahead faster and improve the delivery cycle, with reduced downtime***



## High Precision Security and Surveillance Equipment Integration

- We have reached a high level of technology advancement, where there are a variety of quality surveillance equipment available in the market, at the most economical prices. But these high quality products are not necessarily efficient when they start operations in integration with other security equipment.
- AnexSECURE creates highly secure work environments and designs surveillance solutions best suited for your location. It also creates highly effective surveillance monitoring and control solutions for your network so you can monitor your location, sitting at any remote location in the world.
- The solution includes
  - Scalable POE switch inducted high-resolution CCTV cameras, so as your location expands, the solution expands with it.
  - High Channel DVR/NVR, to accommodate the feed from all the cameras at one location within the network.
  - High-precision beam sensors to avoid the unwanted entry of vehicles and personnel in restricted areas.
  - Biometric Sensors along with pre-registered entry from the network to allow only authorized personnel entry into the premises.
  - Some other solutions include fire alarm systems, door and spy camera systems etc
- If your cameras are located at remote locations, we can integrate them with AnexGATE ACE appliances that support dual sims to provide secure internet connections even at remote locations .

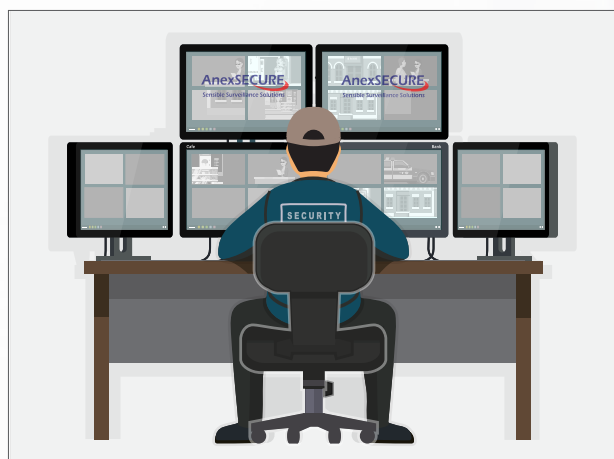
***In the logistics, the integration of all the security and surveillance systems along with a secure connectivity option highly improves the productivity, as well as reduces the internal losses.***



## Authorized Access for Remote Monitoring and Control

- Warehouses are not necessarily present within city limits. Plus, many industries have branches all over the country and have their Head Offices located in the metro cities. In this case, it is difficult to monitor and keep a track of all the activities happening at all these locations.
- As this transmission happens securely over a VPN, it cannot be accessed by anyone without relevant authority and access.
- The integration of all the cameras and transmitting the feed securely over AnexGATE ACE appliances allows authorized access for authorized personnel to view the feed from all these locations sitting in the comfort of their office anywhere in the world.

***This solution is a critical value addition tool to the logistics industry as it produces highly secure environments, eliminates thefts, reduces damage to the parcels and provides good insights on the daily routines of the warehouses or branch offices. With 2-way VPN, IP command also provides a unique feature of pan, tilt and zoom of cameras (Comprehensive control over camera) from your Head Office***



## Volumetric Weight Measurement

- The Volumetric weight of any package is a crucial parameter taken into consideration when the cost of a package is considered. Every package is priced based on its actual weight or volumetric weight (whichever is higher) The volumetric weight is loosely calculated and considered in dealing with daily transit or individual packages. But when collectively calculated, the volumetric weight measurement can cause substantial losses in the longer run.

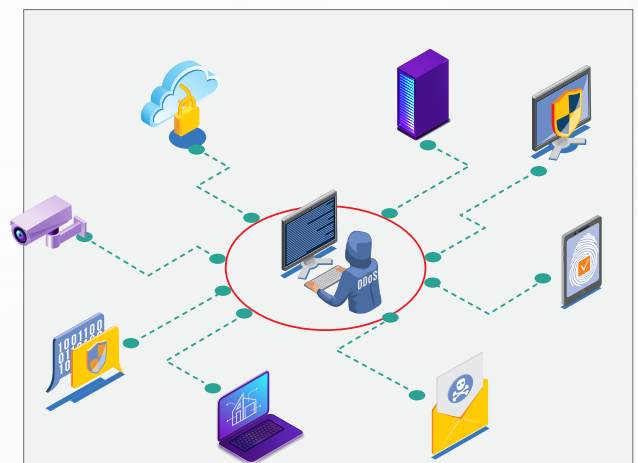


- AnexVM precisely and accurately measures all the dimensions of any package (regular or irregular shaped) and calculates the volumetric weight of that package providing a clear values for actual and volumetric weight.
- All these calculations are carried out within seconds of placing the box/package on the platform and pushing the button.
- AnexVM calculates the volumetric weight of the parcel based on a predefined formula. All the values are displayed on the screen on the console and printed along with a barcode that can be scanned for accurate results from the starting point to the destination.
- There are provisions for attachments like bar code scanners, printer and conveyors etc that will speed up the transit process.
- AnexVM is a one-of-its-kind machine that can be connected with the cloud so you can monitor various machines at a single location, anywhere in the world.

**AnexVM is a highly efficient value addition to the logistics industry in terms of reducing losses due to volumetric weight calculations, improving profits in that process, improving transit time by bar code scans, data availability due to cloud provision.**

## Comprehensive Perimeter Security and Surveillance

- AnexGATE provides a secure environment solutions to all the branch offices and warehouses within the network, helps in communicating securely with the head office over a VPN Tunnel.
- Integrating the surveillance equipment with AnexGATE, keeps the access of the feed generated by all these equipment secure and provides access to authorized personnel only.



- The entire network right from the Head Office to all the endpoints of the branch offices are covered under one network

**All the appliances and solutions provided to the logistics industry create a secure work environment right from the Head Office to all the Endpoints, with the inclusion of all surveillance Equipments as well, providing comprehensive perimeter security and surveillance**