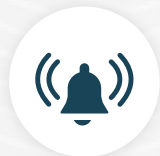


INTEGRATED SECURITY SOLUTIONS FOR SURVEILLANCE AND CONTROLLED ACCESS

Providing turnkey solutions for security, surveillance and controlled access by integrating multiple security equipments under one extensive network



POE Switch based Network Cameras



High End Sensors and Alarm Systems



Secure Remote Access of feed



Complete Perimeter Security

DHL is a warehousing and logistics giant that provides superior service for some of the world famous brands as well as many major businesses in India and all around the world. The volume of packages in transit through all its warehouses is so high that at any point of time the value of stock is several million dollars. To successfully manage this volume, most of its warehouses are huge and measure over 200,000sq.ft.

The size and volume of its transit systems require a comprehensive security solution, not just CCTV coverage but also Fire Alarm Systems, Access Control, Management of Emergency doors, restrictions for forklifts to get in to undesired areas using beam sensors etc. The entire security and surveillance systems need to be smart and have a high uptime to have a fail proof integrated system. This ensures the highest quality of service, they can guarantee to their customers.

Customer Challenge

Every warehouse and logistics company needs to ensure security excellence and eliminate fraudulent claims. They need a highly reliable video surveillance solution to monitor receiving and loading/unloading activities to protect every shipment. DHL wanted to monitor every detail of the process, starting from when a shipment enters the gates of the warehouse until it leaves the premises. In addition to these records had to be maintained for future reference.

DHL wanted to guarantee the highest level of security for its warehouses and all transportation. This also included the monitoring and protection of its own people and assets for a safe work environment. One of the main requirements of this project was the complete elimination of any possibility of theft of packages from its warehouses and to capture evidence of any incidental property damage from delivery trucks to their warehouse bays.

Enhanced security and surveillance solution was a priority as DHL customers expect full security for their valuable products and packages that are handled by them.

Challenges Summary

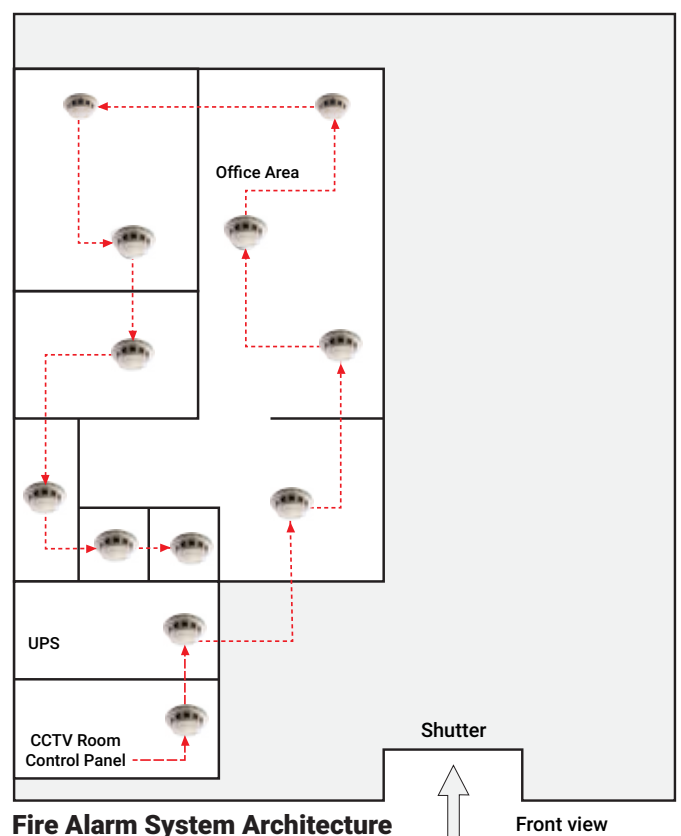
- Increased leakage costs
- Decreasing productivity
- Consignments damages
- Warehouse Rack height
- Number Plate of Vehicle not detecting
- Increasing in theft / crimes
- Misuse of emergency doors
- Controlling of Cameras
- Forklift can't control manual damage
- Variable Lighting Condition/ Extreme Weather Condition
- Fire prevention and alert system

AnexSECURE Solution

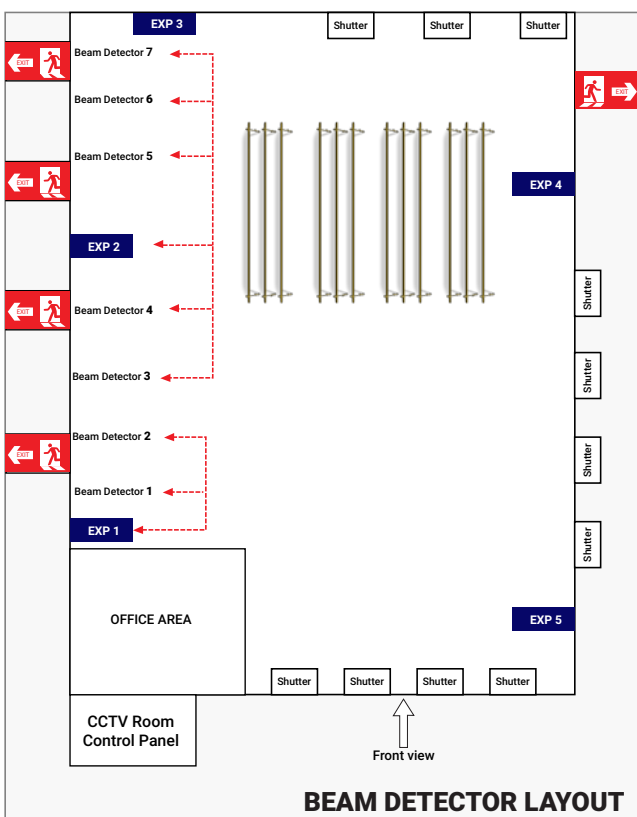
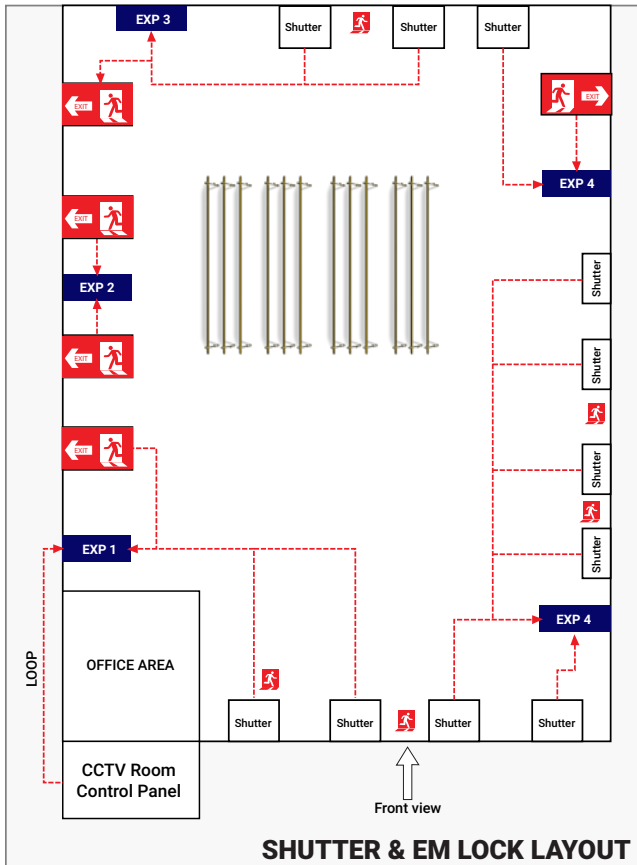
We have extensive experience of providing integrated security solutions for Logistics and Warehousing companies. We analysed the entire perimeter of DHL warehouse for the south region and executed the solution step by step.

First, for Surveillance camera we create a POE switch network so that the solution is safe, secure and scalable for any future expansion. This created a cost beneficial network of cameras that can be monitored from a remote location.

Second, we integrated Fire Alarm Systems, Biometric Access Control systems and an array of sensors in the network for central monitoring and control of the entire perimeter security.

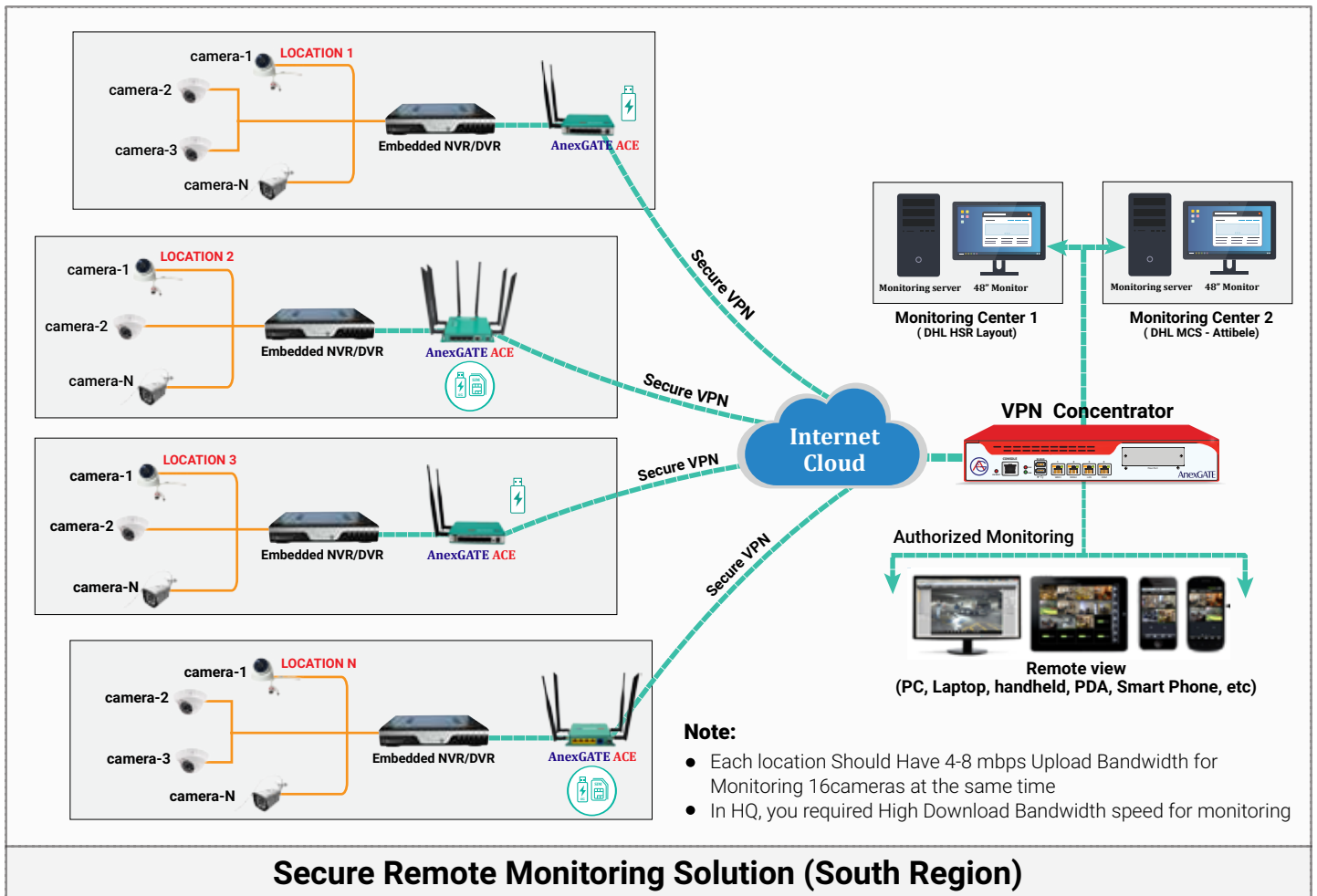


To have a future scalable expansion, we also created a provision for Secure Remote Viewing and control of the entire surveillance system over our ANEXGATE VPN appliances to allow only authorized and authenticated people to have remote viewing, monitoring and control access. We have observed that, by enabling the access for remote viewing and monitoring, the productivity of the desired location can be improved by 10-25%. We have executed multiple such solutions for renowned names in the Indian Logistics and Warehousing Industry that include—Blue Dart, Ecom Express, DTDC, SPOTON, DHL and many more.



List Of Surveillance Equipments		
CCTV System		
SL No	Description	Quantity
1	2MP IP IR Bullet Camera	29
2	2MP IP IR WDR Bullet Camera	11
3	32 channel NVR - 320Mbps Bit Rate	2
4	4 TB Storage Hard Disk	8
5	32" LED TV	1
6	12U Rack for NVR and Switch	1
7	8 port POE switch 10/100/1000	1
8	16 port POE switch 10/100/1000	2
9	24 port POE switch 10/100/1000	1
Fire Alarm system		
10	4 Zone Fire Alarm panel with battery	1
11	Intelligent Reflective Beam Detector	7
12	Smoke detector	12
13	Hooter	1
Intrusion Alarm System		
14	Premier 640 900mA 2.0A	1
15	IP communicator + Monitoring software	1
16	Premier Elite COMGSM Communicator External	1
17	Premier LCD Keypad. White Plastic	1
18	Heavy Duty shutter contact	11
19	8 Zone Expander	5
20	Single leaf EM lock 600lbs with inbuilt magnetic contact	5
21	Relay Module	5
22	Manual call Point No/NC Based Plastic Body with Pull Down	5
23	Self protected hooter with inbuilt battery. Hooter cum strobe.	9

Note: The detailed list of all items utilised n this project is more extensive and is available with our technical team.



Solutions Summary

- Implementation of integrated IP based solution involving Surveillance Camera and scalable POE switch based network
- Smoke detectors with control panel
- Sensors for emergency doors
- Biometric based Access control solution
- Beam sensors for alerting wrong movement of fork lift shafts
- Training to DHL Staff about surveillance management
- Professional documentation kit for reference and troubleshooting

Solutions Results

- Reduced maintenance costs
- Enhanced security system with sophisticated capabilities
- Power over Ethernet for redundancy
- Remote monitoring and management
- Highly Scalable and Economical
- Increased Productivity with Decreased Costs
- Night Vision Camera with High Range IR LEDs
- Controlled Access
- Damage Prevention
- Fire Prevention and Alerts

AnexSECURE™
Sensible Surveillance Solutions

AnexSecure Surveillance Solutions
Smile Security and Surveillance Pvt. Ltd.(SSSPL)

#21/2, Bhattarahalli, Old Madras Road,
14 KM, K.R. Puram, Bangalore-560 049. (INDIA)

