

AnexGATE

Connectivity.Security.Productivity.Manageability



SOLUTIONS PORTFOLIO



+91 876 236 2577
+91 80 4212 0774



sales@anexgate.com



www.anexgate.com

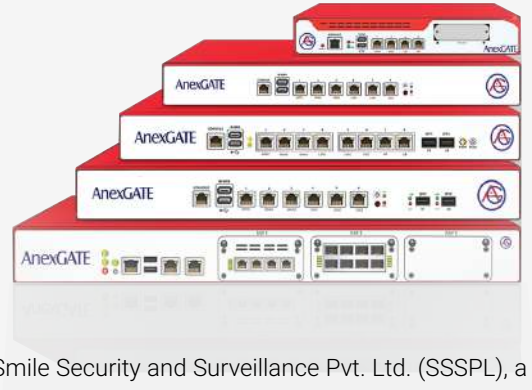
AnexGATE

NETWORK SECURITY AND SECURE CONNECTIVITY SOLUTIONS

AnexGATE Network Security Solutions is one of India's leading providers of Unified Threat Management (UTM), Secure SSL VPN, Distributed Network Architecture and Multi-Homing Security solutions. With high-performance networks, AnexGATE helps businesses create fast responsive and highly trusted environments to increase the deployment of services.

AnexGATE creates application-specific and network-specific solutions for organisations at every level to tackle a multitude of network challenges. Our cost-effective network solutions drive new sources of revenue and help to enhance the safety and security of businesses.

AnexGATE, the brand was founded in 2004 by Rahul Gupta, the founder and CEO for Smile Security and Surveillance Pvt. Ltd. (SSSPL), a stalwart in the IT industry, who is passionate about MAKE IN INDIA for high technology security appliances.



Our Mission

"To manufacture High Technology Products & Solutions as an end-to-end service to customers in domains that requires remote connectivity and monitoring"

Our Vision

"Riding the growth of Security and Surveillance infrastructure in India, be the leaders in high technology solutions enabling – with substantial saving for its customers, margins for partners, associates and shareholders"

AnexGATE

ADD VALUE TO YOUR NETWORK

- Secure mission-critical networks from malicious threats
- Comprehensive perimeter security and connectivity management
- Simplify security infrastructure and solutions
- Provide real time threat protection from malware and virus attacks
- Update the security for intrusion detection and prevention
- Secure IT resources from mobile user threats
- Protect and analyze Internet access control of your organization
- Protect mail and other confidential data and intellectual property
- Increase performance and reduce costs for implementation
- Improve the productivity and efficient of your network infrastructure

The Team behind AnexGATE



Rahul Gupta

Founder & Managing Director - SSSPL

Rahul Gupta, a 1975 Engineering Graduate has been associated with the IT Industry for more than 40 years. Rahul Gupta started his IT career as an Associate Sales Executive in DCM Data Products in the year 1980. He relocated to the Middle East in 1990 and Was General Manager in a local IT component distributions company before joining the ACER Group in 1994. He was the General Manager of Servex Middle East; the distribution company of ACER when he relocated to India in 2002.

Rahul Gupta established his own company in the field of his interest as Smile Security & Surveillance Pvt. Ltd. as passionate association with Network Security, Electronic Surveillance & Digital Content Distribution Technologies. He has successfully been driving AnexGATE (A division of SSSPL) towards being a globally competitive solutions provider in the network security and connectivity domain.

"We are highly passionate about developing innovative and efficient Network Security and Secure Connectivity Solutions - that are completely designed, developed and manufactured in India. This is our small contribution towards Self Reliant India."



Hitesh Dharamdasani

Technology Director

Hitesh has completed his Master of Science in Information Security and Assurance from George Mason University, Fairfax, Virginia and a Bachelors of Engineering in Computer Science from KLS Gogte Institute of Technology, Belgaum. He is an active member of the Centre for Evidence-based Security Research (CESR) and is passionate towards the intersection of Computer Security, Economics of Cybercrime and Machine Learning. He was previously a part of FireEye as a Security Researcher, specializing in researching new threats and reverse engineering the process of malware detection for better security.

In January 2015, he founded a company called Informant Networks, that focuses on Network Security related problems, especially internal security threats. He joined the SSSPL team in 2018 and has been the driving force behind the research and development for improved solutions and the best in class technology exposure

"Innovative and Smart Technology is what drives any organisation towards better products and services. We at AnexGATE continually innovate and improve our solutions to help you Grow your Business and make it Secure and Trouble Free."

Most Common Network Problems **we come across**

Bandwidth Shortage

01

Shortage of Bandwidth during business hours - One of the most common problems that we come across various industry verticals. Even after the availability of multiple internet connections, they invariably fail to provide the necessary output due to lack of a proper structure for management of bandwidth

MPLS or Internet Downtime

02

In India, there still exist many locations where the internet is not stable. For secure connectivity between multiple locations, most renowned companies still use MPLS Technology which is serving them well. But the cost of maintaining a MPLS Network is really high and when the MPLS connection goes down, the entire connection between the head office and branch locations is down, when there is no failover mechanism in place. Since there is no ISP who provides MPLS all over India, most organizations have to depend on multiple MPLS clouds and despite that, have to mix many locations which have to use broadband only.

Open Unsecure Connection between offices

03

Most commercially available connections are open and vulnerable to malicious activities and malware attacks. It is also highly insecure to transfer confidential company data over these connections, as it can be tampered with easily.

Conventional or Outdated Network Infrastructure.

04

We have commonly observed, especially in Tier 2 and Tier 3 locations that companies are majorly using commercially available routers and outdated network systems to interconnect their branch locations. This makes each location a vulnerability to modern day attacks and connectivity problems. In most cases, there is no firewall at these branch locations and thus tempting misuse of the internet.

Minimal Control over Network

05

Most companies that use conventional networks are still using outdated or obsolete connections methods to manage their organisation. Although this creates a channel for information to get in and flow out of the network, it lacks numerous benefits that come with a granular level of access to your network.

Internal Theft - Confidential Data Theft

06

We come across many instances where, intellectual property or confidential data was stolen or copied into various removable storage devices and used maliciously to cause harm to the company.

SOLUTIONS BASED APPROACH

Each organisation is different and so is the network it demands. So each network we create is unique in its identity and is done specifically to meet the organisational network demands. This allows us to create highly secure and productive networks across various industry verticals.

- We focus majorly on the issues the current network is facing and design a highly efficient security fabric around it. This helps us not only to solve the issues faced by the industry, but also add value to its network in terms of data security, secure communication as well as high uptime.
- We have a solution based approach for mitigating network issues to comprehensively create an efficient network infrastructure rather than provide a different appliance for every application. This also helps us to reduce costs substantially to provide budget friendly solutions related to network infrastructures.

REPLACING COMPLEX NETWORKS WITH SMART SOLUTIONS

It is a myth that expensive and complex network security appliances and systems create secure infrastructures. It may, but not necessarily create the network environment that your organisation demands. It is also an expensive affair to have multiple network security appliances at every node in your organisation; it only creates a complicated infrastructure.

- AnexGATE solutions are created by understanding your network needs and simplifying the overall architecture to provide you with only the essentials for your network. Our solutions are developed to understand your network needs and provide a sustainable cost beneficial solution, that smartly recognises your organisations needs and provides you with relevant outputs.

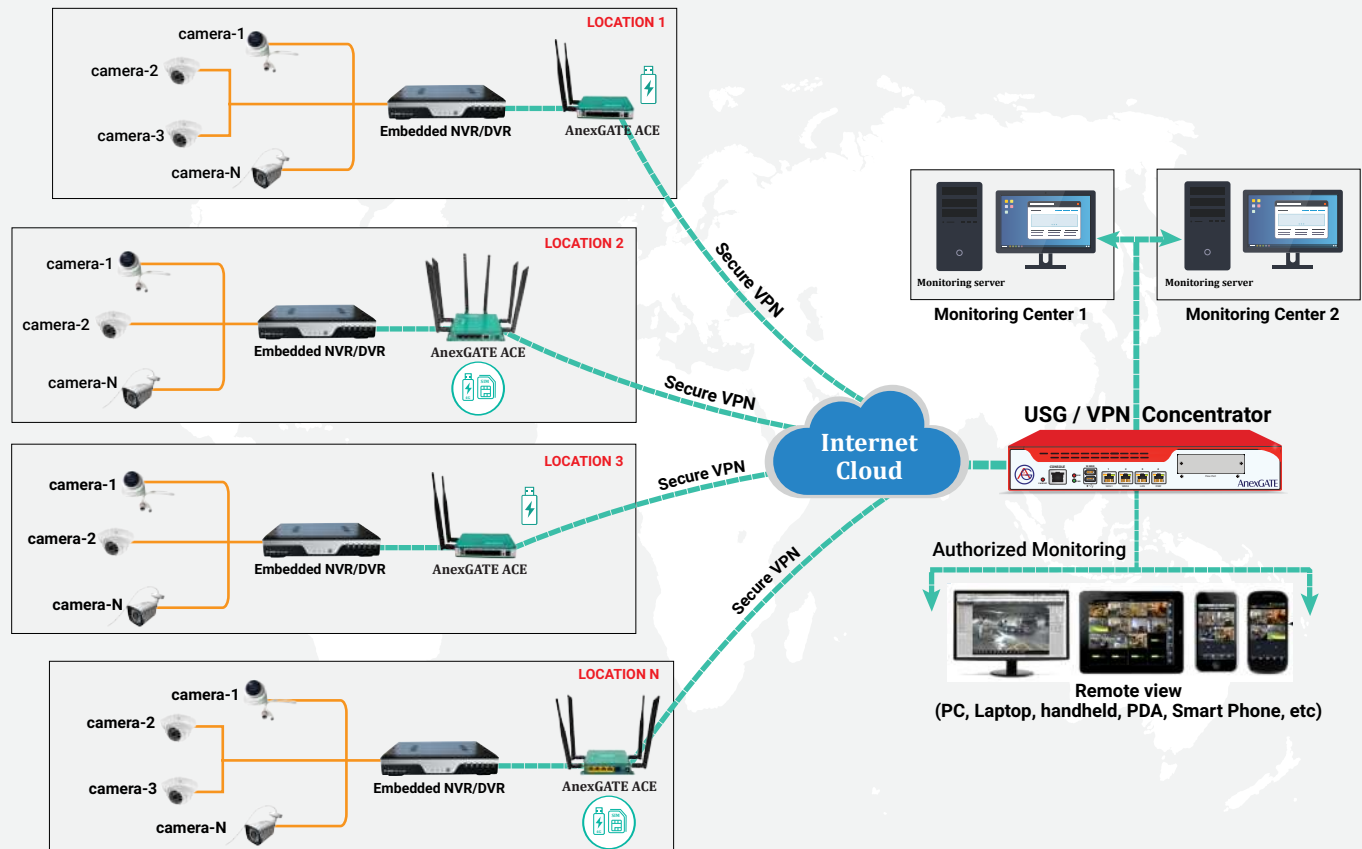
SSL vs IPsec VPN - While most VPN Tunnels communicate through IPsec, we create highly secure SSL VPN Tunnels for all communication for secure access of data from any remote location to your head office server. This is an added layer of security for all communications from all nodes of your network

NOT JUST PHYSICAL APPLIANCES, CLOUD BASED SOLUTIONS ARE EQUALLY SECURE

AnexGATE extensively deals with network security and secure connectivity solutions. But, our solutions are not always routed through physical appliances. We also have a wide range of cloud based solutions, where you can reduce the cost of setting up a physical network and appliances and invest in cloud managed services to have the same infrastructure at a budget friendly cost.

- **Cloud Based Unified Threat Management**
- **Secure VPN Tunnel Interconnectivity**
- **Cloud Fencing**
- **Remote Monitoring for Surveillance**

Integrated Network Security and Surveillance Solutions



These solutions include extensively integrating all the nodes of the network infrastructure and the security and surveillance systems, complete with automatic failover systems and advanced mechanisms for highly productive workspaces in cost effective budgets.

Comprehensive Perimeter Threat Protection

This provides comprehensive real time threat protection for all locations and systems connected to the network, including handled and POS systems, right from the head office to the remote branch locations for protected network infrastructures

100% Internet Uptime with Secure Connectivity

With various advanced inbuilt features like Bandwidth Aggregation, Multilink Failover and Secure connectivity through a SSL VPN Tunnel, we sure all your locations communicate securely with almost 100% Internet Uptime

Cost Effective Integration

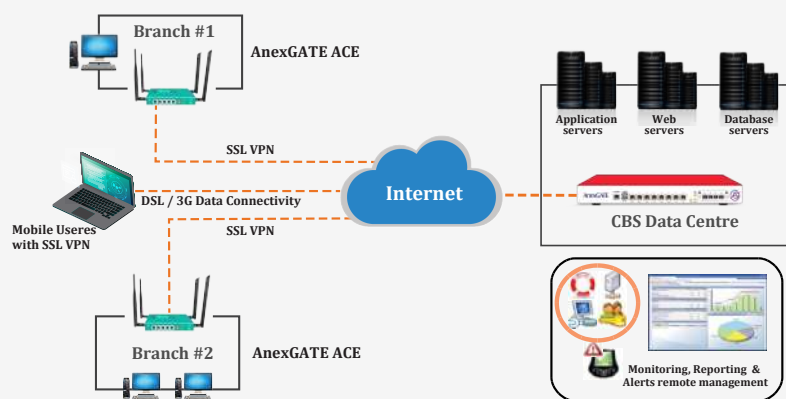
Installing both Network Security and Surveillance separately can be a complex and expensive task. But integrating them into one network, can make the entire system smarter, simplified and can reduce the budget on the entire project by a considerable margin, while creating producing and secure workspaces.

Advanced Security & Surveillance Systems

All surveillance and security equipment that are connected to your network are equipped to tackle modern day threats, like HD Cameras, Network Video Recorders, Biometric Scanners, Motion Sensors, complete with Online Health Checkup and Status updates and monitor on your phones

Industry Specific Cases

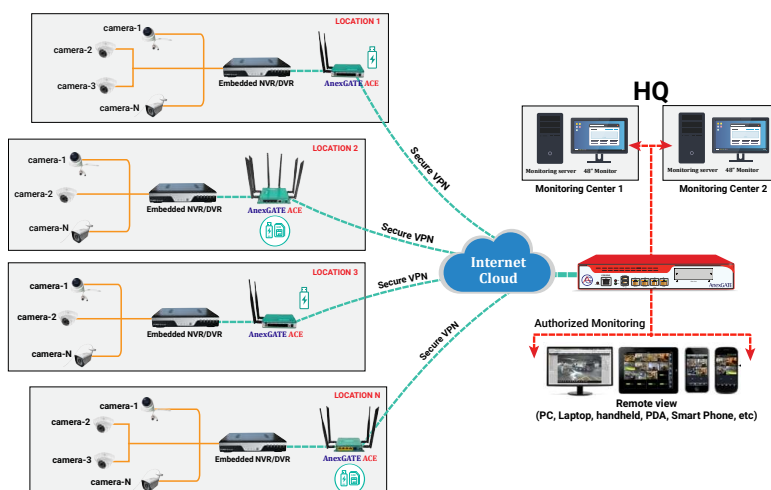
Banking and Financial Institutions



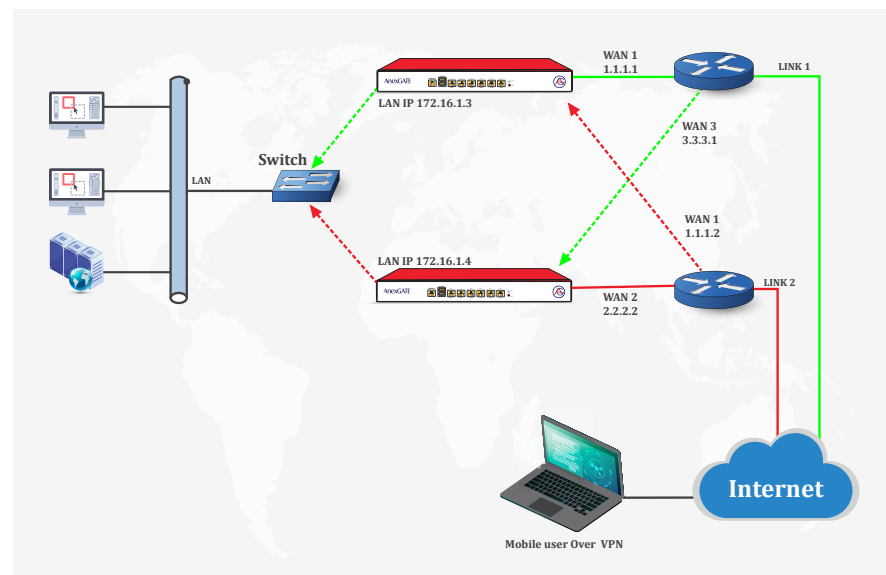
- **Smart networks** - Intelligent management and segregation of every level of the network
- **Secure VPN Tunnel** - Create highly secure transaction communication channel by a secure VPN tunnel
- **Granular Control** - A highly transparent network for administrators, with granular information about every node and end point in the network
- **100% Internet Uptime** - For Branch offices at remote locations with unstable broadband connectivity, create a high uptime network, with the use of Dual Sim support.
- **External Antenna Support** - For locations, with almost no broadband availability, create a strong network with external antenna support

Logistics

- Remote monitoring of all locations, from one dedicated and authorized system by authorized people only.
- Reduce downtime of network at remote locations by use of bandwidth management over sim and USB
- Advanced security and surveillance systems like motion sensors and biometric scanners monitoring every activity over every single location on your network
- Cloud Monitored Health Check up and Control enables granular control and reduced maintenance checkups of your security systems
- Integration of all security and surveillance equipment for all the locations including Head Office and Branch Office reduces complexity and improves the overall efficiency and productivity

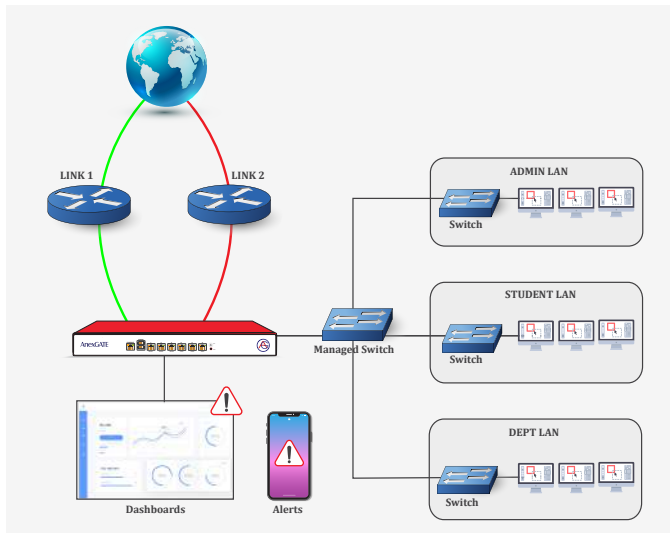


Corporate & Manufacturing



- **Productive Networks** - Complete Bandwidth Management, Multilink Failover for almost 100% Internet Uptime
- **Bandwidth Management** - Efficiently manage the output of your bandwidth to never fall short during critical meetings and events
- **Comprehensive threat protection** - Policy based routing and for safeguarding from malicious threats on the internet
- **Secure VPN Tunnel** - A highly secure interconnectivity channel to access all confidential data by authorized personnel from Head Office Servers by VPN
- **SD WAN** - Allows complete transfer of packeted data for long distances location with minimal data loss and much lower costs.

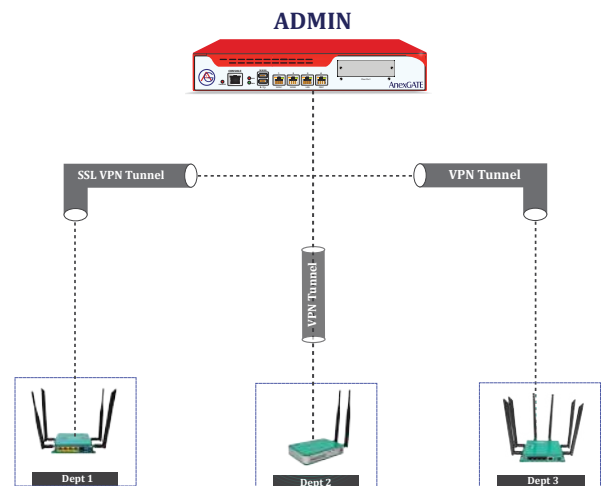
Educational Institutions



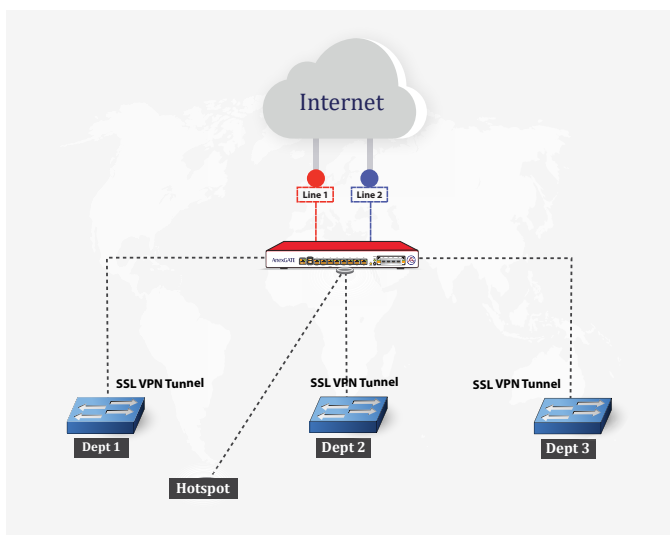
- **Bandwidth Allocation** - Set policies to allocate different bandwidth to different levels based on authority (Management, Staff & Students)
- **Firewall & Threat Management** - Block all malicious websites and unwanted content (including proxies) to allow only educational content
- **Bandwidth Management** - Set limits to the usage and allocation of bandwidth to never fall short during critical events
- **Policy Based Routing** - Create policies to include only specific applications and softwares to run on your network

Hospitals

- **Data Security** - Keep all confidential patient data and hospital documents secure and handy at all times
- **Bandwidth Management and Multilink Failover** - With these inbuilt features, always be online and not let network downtime affect your hospital's health
- **Authorized Access** - All our appliances can be accessed only by authorized personnel from dedicated devices only, keeping all confidential data away from malicious hands.
- **Security and Surveillance System Integration** - This helps you to access your surveillance system remotely from any location.



Hospitality and FMCG Chains



- **Secure Controlled Hotspot Service** - AnexSPOT provides a secure hotspot management service that lets your clients use Wifi services without any hassle
- **One Network, One Login** - We create a VIP secure login, where the customer can login with the same id and password across all your locations throughout the country.
- **Prioritized Wifi Control** - You can provide controlled access to your customers based on their credentials, allowing your priority customers to use a higher bandwidth output
- **100% Internet Uptime** - Allow your customers use their time productively without letting them wait because of network downtime.

Our Customers



RETAIL | LOGISTICS | CORPORATE | EDUCATION | FINANCE | HOSPITALS

Our Solutions

AnexGATE **USG**
Network Security Solutions

AnexGATE **ACE**
Secure Connectivity Solutions

AnexGATE **SECURE VPN**
Secure VPN Connectivity

AnexSPOT
Secure Hotspot Management

AnexSTORE
Network Attached Storage

AnexGATE Patrol
Internal Theft Prevention



FOR MORE DETAILS CONTACT:

AnexGATE Network Security Solutions (A Division of SSSPL)
Smile Security and Surveillance Pvt. Ltd. (SSSPL)
#21/2, MRI Building, First Floor, First Floor, 14KM, Old Madras Road,
Bhattachahalli, K.R Puram, Bangalore -560 049. (INDIA)
Tel : +91 876 236 2577 / +91 80 4212 0774
Email: sales@anexgate.com **Web:** www.anexgate.com

For Channel

